



Remove the two bolts and two clips that retain the top of the grille.



From underneath the vehicle release the tabs that hold the grille tight and remove the grille.



With the grille now removed. Remove the push pins and bolts that hold the bumper skin in place.



Unplug the fog lights and release the wiring harness from the bumper skin.



Release inner fender liner and fender flares from the bumper skin making it so the bumper skin can be lifted off the vehicle.



Remove the 6 bolts that hold the factory aluminum bumper in place and remove the aluminum bumper.

Save hardware as it will be reused.



Optional:

Remove the frame extenders by removing the single bolt on the bottom of them.



Remove the factory skid plate.



Remove the clear tab from the headlight.



Trim the fender flares to be cut even with the line of where the fender and the bumper meet. Also, remove the factory bumper retainer from fender area as well.



Unbolt the six bolts that retain the center cross member and move the cross member out of the way.

(This allows easier access to mount and tighten the new bumper into place.)



Bolt the new internal bumper mounting bar in place with only the inside bolts finger tight only all new hardware will be torqued after the new bumper is installed and aligned.



Insert the half inch bolt into the new internal mount as shown. And remove the plugs from the frame rail for the frame reinforcement brackets to be installed.



Loosely install the frame reinforcement brackets on both sides.

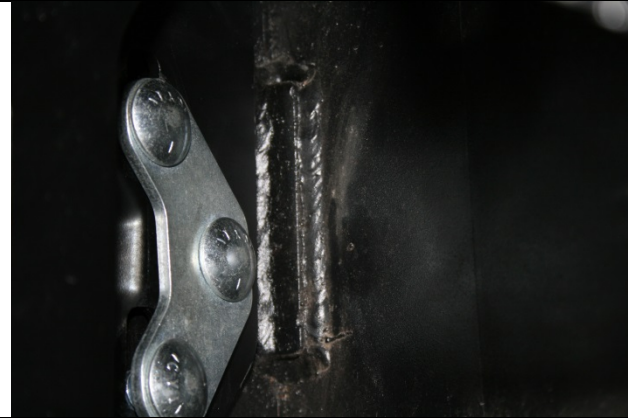


Install the hose relocation bracket on the top of the passenger side frame rail just above where the frame reinforcement bracket is located. Be sure to orient the bracket so that the hose will be moved as far away from the frame as possible.



Now is the time to install the winch and lights into your new bumper if you are installing them.

(Otherwise the bumper will need to be removed when mounting a winch.)



Lift the bumper into place and install the three bolt plate into the mounting hole with the studs face the center of the vehicle this will allow for easy tightening of the bolts.

Lift center and level the bumper. While keeping it centered and level torque all the mounting bolt on the bumper, the internal mounting bar, and frame reinforcement brackets.



With the bumper now installed. Finish Wiring the winch and lights if equipped. Once that is completed reinstall the cross member using the original hardware. If using a remote solenoid with your winch mount it at this time if you haven't already done so.



Cut 1 inch off of the bottom of the grille to allow the grille to clear the internal mounts for the bumper the easiest way to keep it straight is to place 1 inch wide masking tape on the bottom edge of the grille and using it as a guide to cut along the upper edge of the tape.



(This is a reference image to show how far the cut needs to go on the inside of the grille.)

Reinstall the grille, and the factory skid plate once the cutting is complete.



Trim the bottom of the inner fender well off as shown.



Tuck the inner fender up into the bumper to keep them out of the way. We use zip ties to secure the fender liner in place. (Or if you prefer you can cut the fender liners off.)